

# Harper



A characterful simplicity conceals Harper's subtle angles and complex joinery.

Made to order upholstered in fabric or leather with an exposed timber frame.

Design by Jordan Lab

## MATERIALS

Solid American Oak frame with a high resilience foam seat and back

## ENVIRONMENTAL CERTIFICATIONS

Available with timber Chain of Custody

## MANUFACTURER

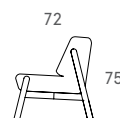
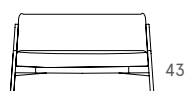
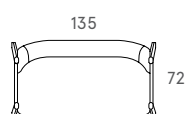
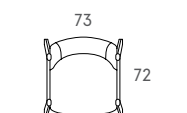
Jordan, Melbourne  
ISO 14001

## WARRANTY

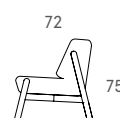
10 years structural

## DIMENSIONS

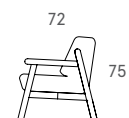
### Sofas and Armchairs



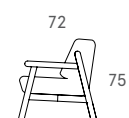
HP73A



HP135A



HP73



HP135



Melbourne, Australia  
SINCE 1987

JARDAN

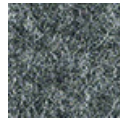
UPHOLSTERY OPTIONS

---

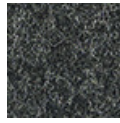
Felt fabric



Dove



Granite



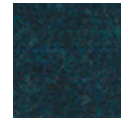
Soot



Glacier



Aquarium



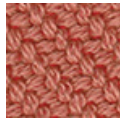
Deep Sea



Citrine

---

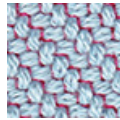
Cable fabric



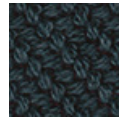
Peach



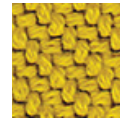
Coconut



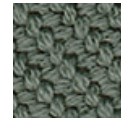
Powder



Baltic



Dandelion



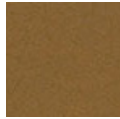
Sage



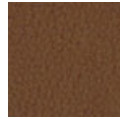
Billabong

---

Ranch leather



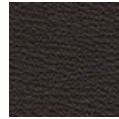
Clay



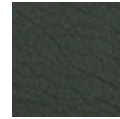
Saddle



Steel



Arabica



Elephant



Midnight

---

FRAME OPTIONS

---

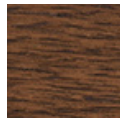
American Oak



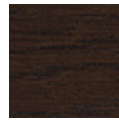
Clear



Chalk



Sable



Donkey



Cocoa



Ebony

---

Notes

For more fabric, leather and material options see [jardan.com.au/materials](http://jardan.com.au/materials)

